

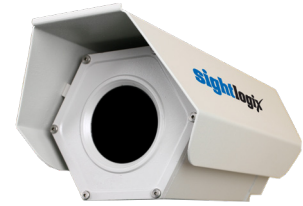
Thermal SightSensor

Long-Range Detection Camera



Outstanding Thermal Intruder Detection

The Thermal SightSensor is a smart outdoor security camera that uses SightLogix' acclaimed video analytics to detect intruders with high accuracy and low nuisance alerts at perimeters and outdoor areas. With a thermal imager, integrated video analytics, advanced video processing and built-in stabilization, the ruggedized Thermal SightSensor provides outstanding detection in harsh conditions, while providing crisp, clear video day and night.



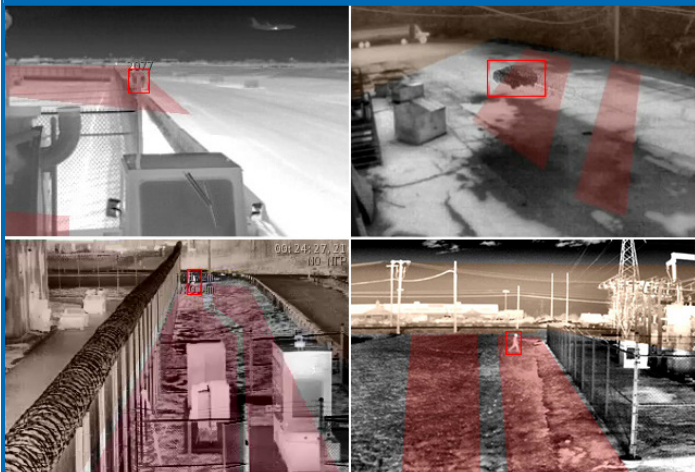
FEATURES

- ✔ Powerful On-board Processing
- ✔ Geospatial Video Analytics
- ✔ Long-range human detection up to 600 meters

BENEFITS

- ✔ Unmatched analytic accuracy & video clarity
- ✔ Near-zero nuisance alerts, 24/7, all conditions
- ✔ Lowest cost/meter for perimeter and area security

Processing Yields Unmatched Accuracy and Clarity



ORDERING INFORMATION

Part Number	Crossfield Detection	Inbound Detection	FOV
NS35-320	172 ft (53m)	113 ft (35m)	90°
NS62-320	305 ft (93m)	203 ft (62m)	60°
NS95-320	468 ft (143m)	312 ft (95m)	42°
NS160-320	787 ft (240m)	525 ft (160m)	24°
NS242-320	1191 ft (363m)	794 ft (242m)	16°
NS430-320	1969 ft (600m)	1411 ft (430m)	9°
NS600-320	1969 ft (600m)	1969 ft (600m)	6.2°

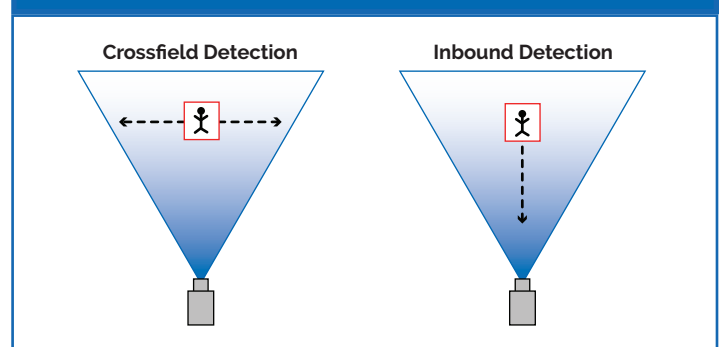
ACCESSORIES

Mounts – Refer to the *SightLogix Accessories Datasheet*.

SightMonitor – GPS-based target display and configuration software.

SightTracker – Automatic PTZ controller.

HOW DETECTION RANGE IS MEASURED



745 Alexander Road | Princeton, NJ 08540
 p +1 609.951.0008 | f 609.951.0024
www.sightlogix.com



Specifications

✔ Video Analytics

Video Analytic Rules (Up to 64 individual Alarm Zones)

Motion Tracking, From/To Zones, Target Size Filtering, Wrong-Way Direction, Loitering, Object Left Behind, Speed, Time of Day, Mask Zones

Target Object Parameters

Time, alarm state, creation time, GPS position, size, heading, speed, aspect ratio, and alarm zone

✔ Target Tracking Output

Communications

Metadata via industry standard XML over a HTTP/HTTPS interface for 3rd-party integration

SightTracker (optional)

Provides detected targets' GPS coordinates to automatically position PTZ cameras for continual tracking

✔ Imager

Detector: Un-cooled VOx Microbolometer: 8-14 micron

Resolution: 320x240 (fixed lens)

Fields of View: 90° 60° 42° 24° 16° 9° 6.2°

Dynamic Range: 14 bit digital sensor interface

Sensitivity (NETD) f/1.0: < 50 mK at room temp

Compression: H.264, MPEG-4 (Simple Protocol), MJPEG

Frame Rate: Up to 30 FPS; user configurable

✔ Network

Ethernet Wired

100 RJ45, IEEE 802.3, 802.3i, 802.3u

Data Rate: 64 kbps to 8 Mbps

Operating Mode: 100 Mbps - Full-duplex, Half-duplex

Protocols: DHCP, IPv4, HTTP, HTTPS, SSL, SLP, DNS, NTP, RTSP, RTP, TCP, UDP, IGMP, RTCP, ICMP, ARP

Configuration: SightMonitor or Web browser (using default IP address)

✔ Electrical

Voltage: 24 VAC/DC +/- 10% or PoE IEEE 802.3af

Total max power (with heater): 26W (1.5 amps) @ 24V

- **Basic camera operation:** 6W

- **Window Heater (severe conditions):** 20W (requires 24V)

I/O Connectors: RJ45 (Ethernet), SMB (video in & out), terminal blocks for RS422/RS232, power, audio out, relay out

Audio Out: Balanced line output for external speaker to broadcast default message on alarm

✔ Camera Enclosure

Weight

2.1 kg (4.6 lbs.)

Enclosure

IP66

Dimensions

30.7 cm L x 14.7 cm W x 14.0 cm H

Mounting

3 x 1/4-20 UNC bolts

✔ Environmental

Operating Temperature

-40° to +60°C (-40° to +140°F)

Relative Humidity

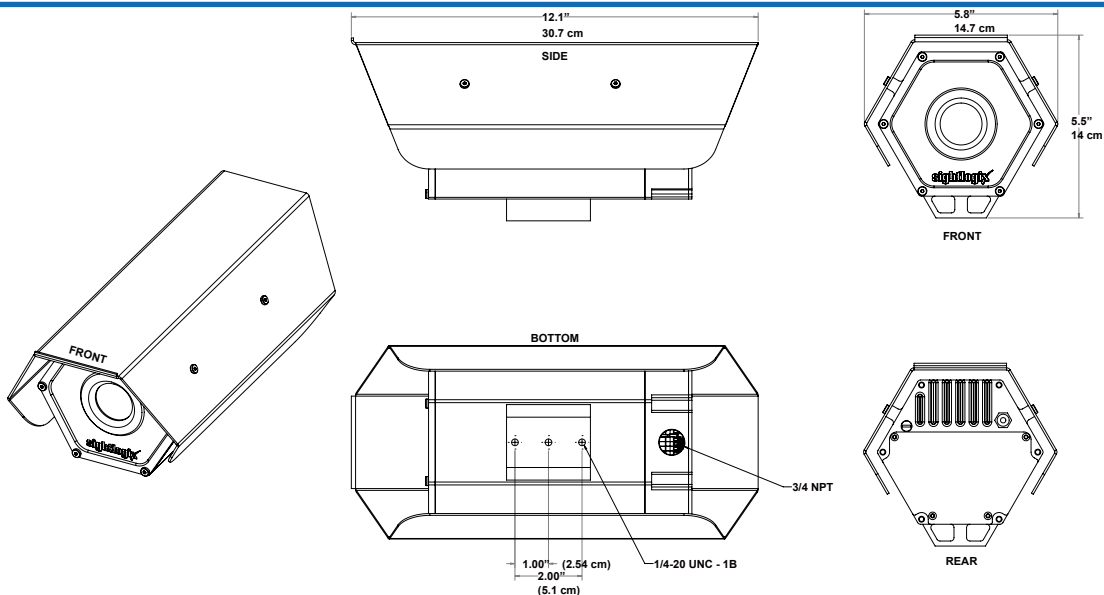
0 to 100%

Storage Temperature

-40° to +80°C (-40° to 176°F)

Safety Compliance

FCC Part 15, Class A, CE



Specifications are subject to change without notice. © SightLogix, Inc. SightLogix, SightSensor and SightMonitor are registered trademarks of SightLogix, Inc.