

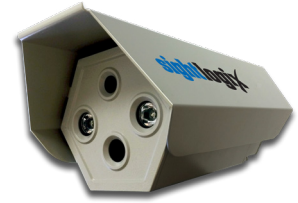
# SightSensor HD

## Thermal-Visible Smart Camera



### Dual-Video Detection Camera for Outdoor Security

The SightSensor HD is a dual-video smart camera that detects intruders with high accuracy and low nuisance alerts at commercial outdoor sites. SightSensor HD combines a thermal sensor, a high-definition color imager, onboard video storage, automatic stabilization, built-in LED illumination and integrated video analytics into a complete 24-hour security solution.



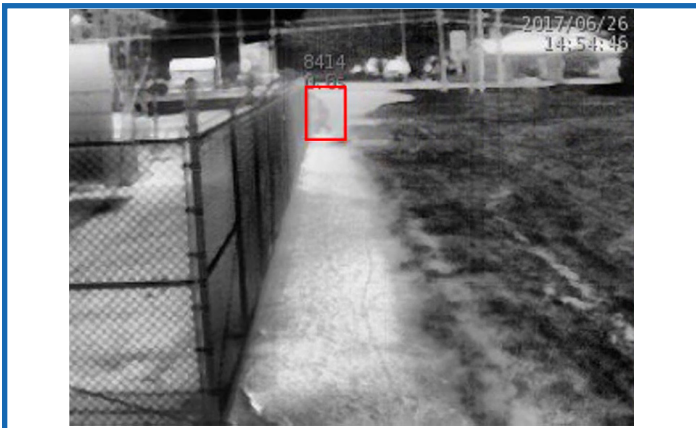
#### FEATURES

- ✔ Detects, rejects and validates thermal & visible activity in real-time
- ✔ Thermal and visible sensors in one device
- ✔ Tight integration with VMS & alarm automation software

#### BENEFITS

- ✔ Higher detection performance and lower false alarms
- ✔ Reliable daytime and nighttime security
- ✔ Works seamlessly with existing systems

#### THERMAL



Detection red box also displayed on color video

#### HD COLOR



White border indicates thermal detection zone

#### ACCESSORIES

##### Mounts

Wall and pole mounts available. Refer to the *SightLogix Accessories* datasheet

##### SightMonitor

GPS-based target display and coordination software. Refer to the *SightLogix SightMonitor Datasheet*

##### SightTracker

Automatic PTZ controller. Refer to the *SightLogix SightTracker Datasheet*.

#### ORDERING INFORMATION

Part Number	Inbound Detection	Detection FOV	Visible FOV
HD236-220	138 ft (42m)	36°	51°
HD220-220	262 ft (80m)	20°	27°
HD395-220*	100 ft (30m)	95°	125°
HD355-220	151 ft (46m)	55°	71.5°
HD332-220	246 ft (75m)	32°	40°
HD324-220	328 ft (100m)	24°	27°

Detection distance will be further if person is moving across the FOV  
\*NIR Illumination not included with HD395

Equipment described herein is subject to US export regulations and may require a license prior to export. Diversion contrary to US law is prohibited. ©SightLogix, Inc. All rights reserved

PN 6-2000015-008  
April 2020 | Made in the USA

745 Alexander Road | Princeton, NJ 08540  
p +1 609.951.0008 | f 609.951.0024  
[www.sightlogix.com](http://www.sightlogix.com)



# Specifications

## ✓ Thermal Imager

### Thermal Detector

Un-cooled VOx Microbolometer 8-14 micron

### Resolution

206x156 or 320x240

### Dynamic Range

14 bit digital sensor interface

### Aspect Ratio: 4:3

**Sensitivity (NETD):** <60mK at f/1.0

**Frame Rate:** Up to 15 FPS

**Video Output:** H.264, MJPEG

## ✓ HD Color Imager

**Imager:** 2 MP (1/2.8-inch, Progressive Scan CMOS)

**Aspect Ratio:** 16:9 (Full HD 1080p, 1920 x 1080)

**Dynamic Range:** WDR >120db Multiple exposure

**Imaging Area:** Diagonal 6.46 mm (Type 1 / 2.8)

**Minimum Illumination:** 0.01 Lux @ F1.2

**Frame Rate:** Up to 15 FPS **Lens:** f1.6, fixed focus

**NIR Illumination Range:** (Dual 850nm LEDs)\*\*  
45M for HD236, HD355; 70M for HD220, HD332, HD324

\*\*NIR Illumination not included with HD395

**Day/Night:** Controllable IR cut filter

**Video Output:** H.264, MJPEG

## ✓ Video Analytics

### Video Analytic Rules

Dual-Sensor Analytics (DSA), Motion Tracking, From/To Zones, Target Size Filtering, Wrong-Way Direction, Loitering, Object Left Behind, Speed, Time of Day, Mask Zones

**Onboard Storage** - Built-in microSD slot (card not supplied; high-endurance cards strongly recommended). Stored clips accessed via web browser.

### Communications

Metadata via industry standard XML over a HTTP/HTTPS interface for 3rd-party integration

### SightTracker (optional)

Automatically positions supported PTZs onto target

## ✓ Network

### Ethernet Wired

100 RJ45, IEEE 802.3, 802.3i, 802.3u

**Data Rate:** 64 kbps to 8 Mbps

### Operating Mode

100 Mbps - Full-duplex, Half-duplex

### Protocols

DHCP, IPv4, HTTP, HTTPS, SSL, SLP, DNS, NTP, RTSP, RTP, TCP, UDP, IGMP, RTCP, ICMP, ARP

### Configuration

Browser-based WebConfig or SightMonitor application

## ✓ Electrical

### Power Requirements

- **Thermal and visible imager use only:**  
8W, 24VAC +/- 10% or PoE IEEE 802.3af

- **NIR Illumination (if enabled):** 6W (24VAC required)

- **Window Heater (if enabled):** 20W (24VAC required)

**Total power (with all functionality):** 34W 24VAC (1.5 amps)

### I/O Connectors

RJ45 (Ethernet), terminal blocks for RS422/RS232, power, audio out, relay out

## ✓ Camera Enclosure

**Weight:** 2.1 kg (4.6 lbs.)

### Mounting

3 x 1/4-20 UNC bolts

### Dimensions

30.7 cm L x 14.7 cm W x 14.0 cm H

### Powder Coat Rating

1000 sea-spray hours

**Enclosure:** IP66

## ✓ Environmental

### Operating Temperature

-30° to +50°C (-22° to +122°F)

### Relative Humidity

0 to 100%

### Storage Temperature

-40° to +80°C (-40° to 176°F)

### Safety Compliance

FCC Part 15, Class A, CE

