

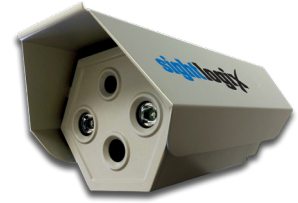
SightSensor HD

Thermal-Visible AI Camera



Dual-Video AI Detection Camera for Outdoor Security

SightSensor HD is a dual-video AI camera that detects and classifies intruders with high accuracy and low false alarms for commercial applications. SightSensor HD combines a thermal sensor, a color imager, video analytics, Dual-Sensor Thermal and Visible AI alarm filtering, onboard storage, stabilization, and LED illumination into a complete 24-hour security solution.



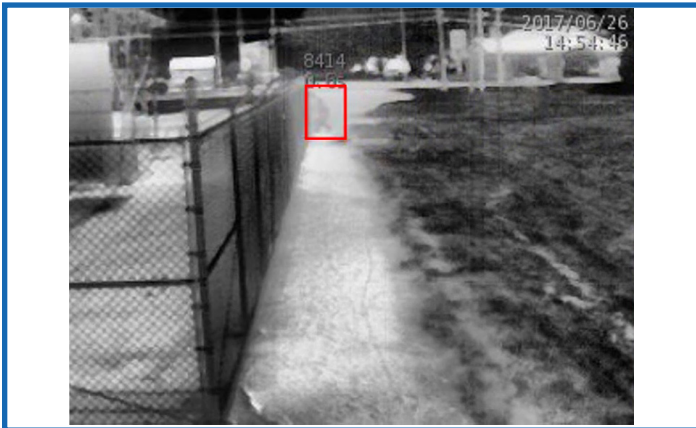
FEATURES

- ✔ Detects, rejects and validates thermal & visible activity in real-time
- ✔ Thermal and visible AI sensors in one device
- ✔ Tight integration with VMS & alarm automation software

BENEFITS

- ✔ Higher detection performance and lower false alarms
- ✔ Reliable daytime and nighttime security
- ✔ Works seamlessly with existing systems

THERMAL



Detection red box also displayed on color video

HD COLOR



White border indicates thermal detection zone

ACCESSORIES

Mounts

Wall and pole mounts available. Refer to the *SightLogix Accessories* datasheet

SightMonitor II

Target display and site management software. Refer to the *SightLogix SightMonitor II Datasheet*

SightTracker PTZ

Smart AI people tracker for outdoor sites. Refer to the *SightLogix SightTracker PTZ datasheet*.

ORDERING INFORMATION

Part Number	Inbound Detection	Detection FOV	Visible FOV
HD260-220*	75ft (25m)	60°	71.5°
HD236-220	138 ft (42m)	36°	51°
HD220-220	262 ft (80m)	20°	27°
HD355-220	151 ft (46m)	55°	71.5°
HD332-220	246 ft (75m)	32°	40°
HD324-220	328 ft (100m)	24°	27°

Detection distance will be further if person is moving across the FOV
*NIR Illumination not included with HD260

Equipment described herein is subject to US export regulations and may require a license prior to export. Diversion contrary to US law is prohibited. ©SightLogix, Inc. All rights reserved

PN 6-2000015-060
Feb 2025

745 Alexander Road | Princeton, NJ 08540
p +1 609.951.0008 | f 609.951.0024
www.sightlogix.com



Specifications

✓ Thermal Imager

Thermal Detector

Un-cooled VOx Microbolometer 8-14 micron

Imager (Pixels)

HD2: 206x156
HD3: 320x240

Imager (Resolution)

HD2: 206x156, Smart Upscaling to 412x312
HD3: 320x240, Smart Upscaling to 640x480

Dynamic Range

14 bit digital sensor interface

Aspect Ratio: 4:3

Sensitivity (NETD): <60mK at f/1.0

Frame Rate: Up to 15 FPS

Video Output: H.264, MJPEG

✓ Video Analytics

Video Analytic Rules

Dual-Sensor Analytics (DSA), Motion Tracking, From/To Zones, Target Size Filtering, Wrong-Way Direction, Loitering, Object Left Behind, Speed, Time of Day, Mask Zones, Shock Detection, Privacy Zones

Dual Sensor AI Alarm Filter:

Thermal AI: Day and night

Thermal/Visible AI: Daytime (day/night if light is available)

Options: "Off", "Everything Except Person and Vehicle," "Everything Except Person," "Everything Except Vehicle".

Onboard Storage - Built-in microSD slot (not supplied; high-endurance cards recommended). Stored clips accessed via web browser.

Communications Metadata via industry standard XML over HTTP/HTTPS interface for 3rd-party integration

✓ Electrical Power Specifications

PoE IEEE 802.3af

Basic Operations: 8W

(Window Heater & NIR Illumination not supported on POE)

24VAC +/- 10% | 28VDC +/- 3VDC

Basic Operations: 8W

Window Heater: 1- 20W, adjustable

NIR Illumination: 5W

I/O Connectors

RJ45 (Ethernet), terminal blocks for RS422/RS232, Power, Audio Out, Relay Out

Relay Out: Max current: 0.3A, Max voltage 24VDC

✓ HD Color Imager

Imager: 2 MP (1/2.8-inch, Progressive Scan CMOS)

Aspect Ratio: 16:9 (Full HD 1080p, 1920 x 1080)

Dynamic Range: WDR >120db Multiple exposure

Imaging Area: Diagonal 6.46 mm (Type 1 / 2.8)

Minimum Illumination: 0.01 Lux @ F1.2

Frame Rate: Up to 15 FPS **Lens:** f1.6, fixed focus

NIR Illumination Range: (Dual 850nm LEDs)**

45M for HD260, 236, 355; 70M for HD220, 332, 324

**NIR Illumination not included with HD260

Day/Night: Controllable IR cut filter

Video Output: H.264, MJPEG

✓ Network

Ethernet Wired

100 RJ45, IEEE 802.3, 802.3i, 802.3u

Data Rate: 64 kbps to 8 Mbps

Operating Mode

100 Mbps - Full-duplex, Half-duplex

Protocols

DHCP, IPv4, HTTP, HTTPS, SSL, SLP, DNS, NTP, RTSP, RTP, TCP, UDP, IGMP, RTCP, ICMP, ARP

Configuration

Browser-based WebConfig or SightMonitor application

✓ Camera Enclosure

Weight: 2.1 kg (4.6 lbs.)

Dimensions

30.7 cm L x 14.7 cm W x 14.0 cm

Enclosure: IP66

Mounting

3 x 1/4-20 UNC bolts

Powder Coat Rating

1000 sea-spray hours

✓ Environmental

Operating Temperature

-30° to +55°C (-22° to +131°F)

Safety Compliance

FCC Part 15, Class A, CE

Operating Relative Humidity

0 to 100%

Storage Temperature

-40° to +80°C (-40° to 176°F)

Storage Relative Humidity

0-95%, non-condensing

