

# SightSensor HD

## Thermal-Visible Smart Camera

**sightlogix**  
making outdoor video... *smarter*

For Video Monitoring Applications

### Thermal Analytics and HD Visible Assessment

The SightSensor HD is an affordable smart camera that uses SightLogix's acclaimed video analytics to detect intruders with high accuracy and low nuisance alerts over outdoor areas. With a thermal imager for detection, high-definition color imager for detail, built-in NIR illumination and integrated analytics, the SightSensor HD combines outstanding thermal intrusion detection with visible assessment for reliable 24-hour security.



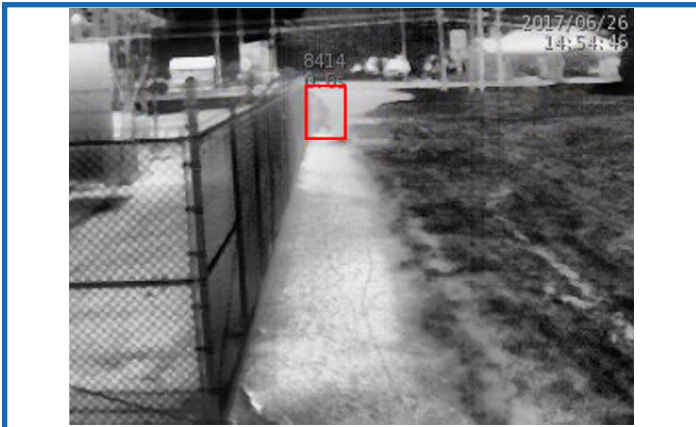
#### FEATURES

- ✓ Thermal detection with built-in Video Analytics
- ✓ High Definition WDR color video
- ✓ Outstanding low-light image quality & IR illumination

#### BENEFITS

- ✓ Accurate intruder detection day and night, all conditions
- ✓ Real-time alarm assessment
- ✓ Nighttime surveillance without additional lighting

#### THERMAL DETECTION



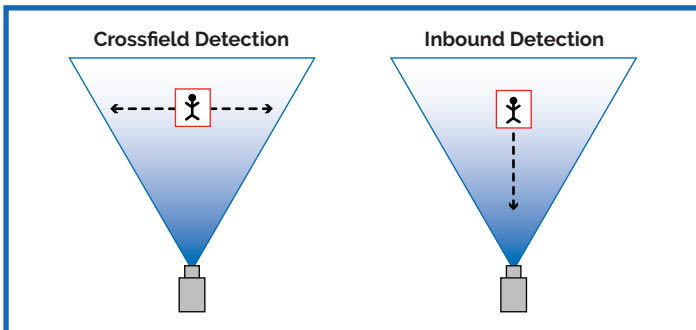
Thermal detection red box also displayed on color video

#### HD COLOR DETAIL



White border indicates thermal detection zone

#### HOW DETECTION RANGE IS MEASURED



#### ORDERING INFORMATION

Part Number	Crossfield Detection	Inbound Detection	Detection FOV	Visible FOV
HD236	276 ft (84m)	138 ft (42m)	36°	51°
HD220	525 ft (160m)	262 ft (80m)	20°	27°
HD332	492 ft (150m)	246 ft (75m)	32°	40°
HD324	656 ft (200m)	328 ft (100m)	24°	27°

Equipment described herein is subject to US export regulations and may require a license prior to export. Diversion contrary to US law is prohibited. ©2018 SightLogix, Inc. All rights reserved

PN 6-2000017-001  
Made in the USA

745 Alexander Road | Princeton, NJ 08540  
p +1 609.951.0008 | f 609.951.0024  
[www.sightlogix.com](http://www.sightlogix.com)

**sightlogix**  
making outdoor video... *smarter*

# Specifications

## ✓ Thermal Imager

### Thermal Detector

Un-cooled VOx Microbolometer 8-14 micron

### Resolution

206x156 or 320x240

### Dynamic Range

14 bit digital sensor interface

### Aspect Ratio: 4:3

**Sensitivity (NETD):** <60mK at f/1.0

**Frame Rate:** Up to 15 FPS

**Video Output:** H.264, MJPEG

## ✓ HD Color Imager

**Imager:** 2 MP (1/2.8-inch, Progressive Scan CMOS)

**Aspect Ratio:** 16:9 (Full HD 1080p, 1920 x 1080)

**Dynamic Range:** WDR >120db Multiple exposure

**Imaging Area:** Diagonal 6.46 mm (Type 1 / 2.8)

**Minimum Illumination:** 0.01 Lux @ F1.2

**Frame Rate:** Up to 15 FPS **Lens:** f1.6, fixed focus

**NIR Illumination (Up to the Inbound Distance)**

Dual 850nm LEDs

**Day/Night:** Controllable IR cut filter

**Video Output:** H.264, MJPEG

## ✓ Video Analytics

### Video Analytic Rules

Motion Tracking, From/To Zones, Target Size Filtering, Wrong-Way Direction, Loitering, Object Left Behind, Speed, Time of Day, Mask Zones

### Communications

Metadata via industry standard XML over a HTTP/HTTPS interface for 3rd-party integration

### SightTracker (optional)

Automatically positions supported PTZ cameras for continual tracking

## ✓ Network

### Ethernet Wired

100 RJ45, IEEE 802.3, 802.3i, 802.3u

**Data Rate:** 64 kbps to 8 Mbps

### Operating Mode

100 Mbps - Full-duplex, Half-duplex

### Protocols

DHCP, IPv4, HTTP, HTTPS, SSL, SLP, DNS, NTP, RTSP, RTP, TCP, UDP, IGMP, RTCP, ICMP, ARP

### Configuration

SightMonitor or Web browser (using default IP address)

## ✓ Electrical

**Voltage:** 24 VAC/DC +/- 10% or PoE IEEE 802.3af

**Total max power (with all functionality):**

34W (1.5 amps) @ 24VAC/DC

- **Basic camera operation:** 8W

- **NIR Illumination:** 6W (requires 24V)

- **Window Heater (severe conditions):** 20W (requires 24V)

### I/O Connectors

RJ45 (Ethernet), terminal blocks for RS422/RS232, power, audio out, relay out

**Audio Out:** Balanced line output for external speaker to broadcast default message on alarm

## ✓ Camera Enclosure

**Weight:** 2.1 kg (4.6 lbs.)

**Enclosure:** IP66

### Dimensions

30.7 cm L x 14.7 cm W x 14.0 cm H

### Mounting

3 x 1/4-20 UNC bolts

## ✓ Environmental

### Operating Temperature

-30° to +50°C (-22° to +122°F)

### Relative Humidity

0 to 100%

### Storage Temperature

-40° to +80°C (-40° to 176°F)

### Safety Compliance

FCC Part 15, Class A, CE

