

SightSensor TC

Long-Range Thermal & Visible Smart Camera



Outstanding Thermal Detection & HD Color Assessment

The SightSensor TC is a dual-imager smart camera that detects, analyzes and communicates real-time intruder activity over critical perimeters at outdoor sites. Building on SightLogix's heritage for high-clarity thermal video and outstanding detection, SightSensor TC offers the added value of color video on target. Like all SightSensors, TC includes integrated video analytics, scene and gyro-based stabilization and a toolbox of filters to optimize outdoor performance.



FEATURES

- ✓ Thermal detection with geospatial video analytics
- ✓ High Definition WDR color video
- ✓ Outstanding thermal image quality

BENEFITS

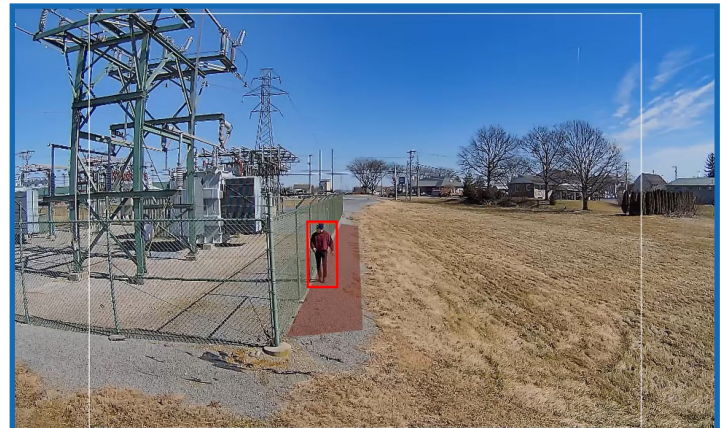
- ✓ Reliable detection - day and night
- ✓ Real-time color alarm assessment
- ✓ Nighttime thermal surveillance without lighting

THERMAL DETECTION



Detection zones optionally displayed for easier setup

HD COLOR DETAIL



Thin white lines indicate thermal detection zone

ORDERING INFORMATION (320x240)

Part Number	Thermal Resolution	Inbound Detection	Detection FOV	Visible FOV
TC35-322	320x240	113 ft (35m)	90°	110°
TC62-322	320x240	203 ft (62m)	60°	82°
TC95-322	320x240	312 ft (95m)	42°	51.3°
TC160-322	320x240	525 ft (160m)	24°	39.6°

Detection distance will be further if person is moving across the FOV

ORDERING INFORMATION (640 x 480)

Part Number	Thermal Resolution	Inbound Detection	Detection FOV	Visible FOV
TC75-622	640x480	246 ft (75m)	90°	110°
TC100-622	640x480	328 ft (100m)	70°	78°
TC145-622	640x480	467 ft (145m)	50°	65.5°
TC195-622	640x480	640 ft (195m)	37.5°	51.3°

Detection distance will be further if person is moving across the FOV

Specifications

✓ Thermal Imager

Thermal Detector

Un-cooled VOx Microbolometer 8-14 μ m

Resolution

320x240 or 640x480

Dynamic Range

14 bit digital sensor interface

Aspect Ratio: 4:3

Sensitivity (NETD) f/1.0: < 50 mK at room temp

Frame Rate: 320: Up to 30 FPS; 640: Up to 15 FPS

Video Output: H.264, MJPEG

✓ HD Color Imager

Imager: 2 MP (1/2.8-inch, Progressive Scan CMOS)

Aspect Ratio: 16:9 (Full HD 1080p, 1920 x 1080)

Dynamic Range: WDR >120db Multiple exposure

Imaging Area: Diagonal 6.46 mm (Type 1 / 2.8)

Minimum Illumination: 0.01 Lux @ F1.2

Frame Rate: Up to 15 FPS **Lens:** f1.6 - f2.0, fixed focus

Day/Night: Controllable IR cut filter

Video Output: H.264, MJPEG

✓ Video Analytics

Video Analytic Rules

Motion Tracking, From/To Zones, Target Size Filtering, Wrong-Way Direction, Loitering, Object Left Behind, Speed, Time of Day, Mask Zones

Communications

Metadata via industry standard XML over a HTTP/HTTPS interface for 3rd-party integration

SightTracker (optional)

Automatically positions supported PTZ cameras for continual tracking

✓ Network

Ethernet Wired

100 RJ45, IEEE 802.3, 802.3i, 802.3u

Data Rate: 64 kbps to 8 Mbps

Operating Mode

100 Mbps - Full-duplex, Half-duplex

Protocols

DHCP, IPv4, HTTP, HTTPS, SSL, SLP, DNS, NTP, RTSP, RTP, TCP, UDP, IGMP, RTCP, ICMP, ARP

Configuration

SightMonitor or Web browser (using default IP address)

✓ Electrical

Voltage: 24 VAC/DC +/- 10% or PoE IEEE 802.3af

Total max power (with all functionality):

31W (1.5 amps) @ 24VAC/DC

- **Basic camera operation:** 11W

- **Window Heater (severe conditions):** 20W (requires 24V)

I/O Connectors

RJ45 (Ethernet), terminal blocks for RS422/RS232, power, relay out

✓ Camera Enclosure

Weight: 2.1 kg (4.6 lbs.)

Mounting

3 x 1/4-20 UNC bolts

Dimensions

30.7 cm L x 14.7 cm W x 14.0 cm H

Powder Coat Rating

1000 sea-spray hours

Enclosure: IP66

✓ Environmental

Operating Temperature

-40° to +60°C (-40° to +140°F)

Relative Humidity

0 to 100%

Storage Temperature

-40° to +80°C (-40° to 176°F)

Safety Compliance

FCC Part 15, Class A, CE

