

# SightSensor GTC (International)

Smart Thermal & Visible Detection Camera

**sightlogix**  
making outdoor video...smarter

## Outstanding Thermal and HD Color Detection

The SightSensor GTC is a dual-imager smart camera that detects, analyzes and communicates real-time intruder activity over site perimeters and buffer zones. The GTC works at the edge and includes powerful video processing, a thermal sensor, a high-definition color sensor, geo-aware video analytics, thermal AI nuisance alarm filtering, automatic stabilization, exceptional thermal clarity, and a toolbox of filters to optimize outdoor intruder detection performance.



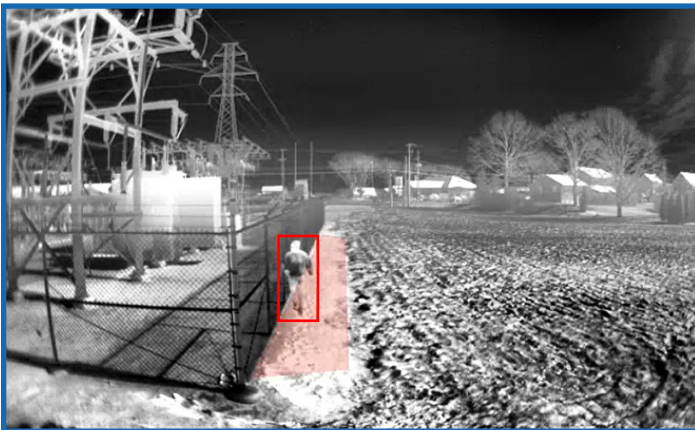
### FEATURES

- ✓ Thermal and visible color sensors in one device
- ✓ Geospatial Video Analytics
- ✓ Outstanding thermal image quality

### BENEFITS

- ✓ Detects & validates thermal & visible alarms in real-time
- ✓ Higher detection accuracy and lower false alarms
- ✓ Nighttime thermal surveillance without lighting

### THERMAL DETECTION



Detection zones optionally displayed for easier setup

### HD COLOR DETAIL



Thin white lines indicate thermal detection zone

### AVAILABLE ACCESSORIES

#### Mounts

Wall and pole mounts available. Refer to the *SightLogix Accessories* datasheet.

#### SightMonitor II

Site management and GPS target display software. Refer to the *SightLogix SightMonitor II* datasheet.

#### SightTracker PTZ

Smart AI people tracker. Refer to the *SightLogix SightTracker PTZ* datasheet.

### ORDERING INFORMATION (640 x 480)

Part Number	Inbound Detection	Thermal FOV	Thermal Focal Length	Visible FOV
GTC690-220	75m / 246 ft	90°	7.5mm	110°
GTC670-220	100m / 328 ft	70°	9mm	78°
GTC650-220	145M / 475 ft	50°	13mm	65.5°
GTC632-220	220M / 722 ft	32°	19mm	40°

Crossfield detection may be up to 50% further, depending on application conditions.

PN 6-2000023-006 May 2024  
©SightLogix, Inc. All rights reserved

# Specifications

## Thermal Imager

**Detector:** Un-cooled VOx Microbolometer, 17 micron

**Resolution:** 640x480 (fixed lens)

**Dynamic Range:** 14 bit digital sensor interface

**Sensitivity (NETD):** 40mk/f1.0/25°C

**Frame Rate:** Up to 25 FPS; user configurable

**Video Output:** H.264, MPEG-4 (Simple Protocol), MJPEG

## Video Analytics

### Video Analytic Rules (Up to 64 individual Alarm Zones)

Motion Tracking, From/To Zones, Target Size Filtering, Wrong-Way Direction, Loitering, Object Left Behind, Speed, Time of Day, Mask Zones, Shock Detection, Privacy Zones

**Thermal AI Filter Options:** "None", "Everything Except Person and Vehicle," "Everything Except Person," "Everything Except Vehicle".

**Onboard Storage** - Built-in microSD slot (card not supplied; high-endurance cards strongly recommended). Stored clips accessed via WebConfig.

## Communications

Metadata via industry standard XML over a HTTP/HTTPS interface for 3rd-party integration

## Electrical Power Specifications

### PoE IEEE 802.3af

Basic ops: 15W  
(Window Heater not supported on POE)

### 24VAC +/- 10%

Basic ops: 15W  
Window Heater: 1- 20W (adjustable)

### I/O Connectors

RJ45 (Ethernet), terminal blocks for RS422/RS232, power, relay out

**Relay Out:** Max current: 0.3A, Max voltage 24VDC

## HD Color Imager

**Imager:** 2 MP (1/2.8-inch, Progressive Scan CMOS)

**Aspect Ratio:** 16:9 (Full HD 1080p, 1920 x 1080)

**Dynamic Range:** WDR >120db Multiple exposure

**Imaging Area:** Diagonal 6.46 mm (Type 1 / 2.8)

**Minimum Illumination:** 0.01 Lux @ F1.2

**Frame Rate:** Up to 15 FPS **Lens:** f1.6 - f2.0, fixed focus

**Day/Night:** Controllable IR cut filter

**Video Output:** H.264, MJPEG

## Network

### Ethernet Wired

100 RJ45, IEEE 802.3, 802.3i, 802.3u

**Data Rate:** 64 Kbps to 8 Mbps

### Operating Mode

100 Mbps - Full-duplex, Half-duplex

### Protocols

DHCP, IPv4, HTTP, HTTPS, SSL, SLP, DNS, NTP, RTSP, RTP, TCP, UDP, IGMP, RTCP, ICMP, ARP

**Configuration:** SightMonitor application or browser-based WebConfig

## Camera Enclosure

**Weight:** 2.1 kg (4.6 lbs.)

### Dimensions

30.7 cm L x 14.7 cm W x 14.0 cm H

**Enclosure:** IP66

### Mounting

3 x 1/4-20 UNC bolts

**Powder Coat Rating**  
1000 sea-spray hours

## Environmental

### Operating Temperature

-40° to +60°C (-40° to +140°F)

### Safety Compliance

FCC Part 15, Class A, CE

### Operating Relative Humidity

0 to 100%

### Storage Temperature

-40° to +80°C (-40° to 176°F)

### Storage Relative Humidity

0-95%, non-condensing

