

SightMonitor® II

Target Display and Site Management Software



Real-Time Situational Awareness

SightMonitor II is a target monitoring application for devices in the SightLogix smart camera system. SightMonitor II displays the location of detected intrusions as they move through-out the scene, overlaid on a geo-positioned aerial image of the surveillance area. Sight-Monitor II also accurately represents the location of SightLogix devices and their detection zones. The result is complete situational awareness over large outdoor areas.

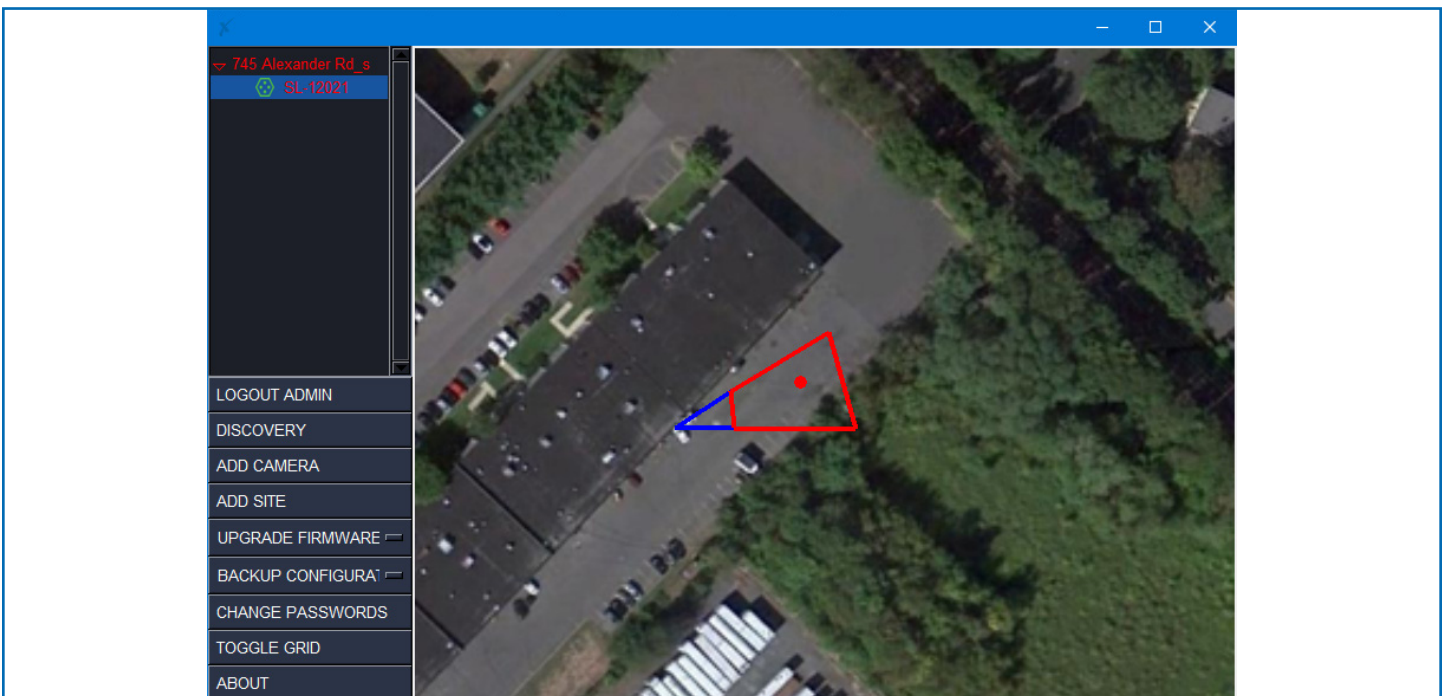


FEATURES

- ✓ Real-time target display, projected onto topology map
- ✓ Site-wide firmware updates and backups

BENEFITS

- ✓ Situational awareness for a fast and precise response
- ✓ Easier management over many devices



ORDERING INFORMATION

Part Number	Description
SL-SM-2	SightMonitor Software

ACCESSORIES

SightSensor® smart security cameras
SightTracker - Autosteers PTZs onto detected targets.
Geo-positioned aerial photo or site-map of a specific facility.

PN 6-2000020-002 Jan 2023

Specifications

Client Requirements

Operating Systems	Windows 10 Professional, Windows 11 Professional or Windows Server 2019
Hardware	A PC with a 2 GHz dual-core processor (ideally I7-core or above) Min 8GB RAM (16GB and higher recommended)

Target Tracking Output

Communications	Metadata via industry standard XML over a HTTP/HTTPS interface for third-party integration
Real-time Reporting	Current time, alarm state, creation time, GPS position, size, heading, speed, aspect ratio, and alarm zone
Tracked object parameters	Current time, alarm state, creation time, GPS position, size, heading, speed, aspect ratio, and alarm zone
SightTracker (optional)	Provides target GPS coordinates to allow PTZ camera positioning unit and continual target tracking

ADDITIONAL FEATURES

Topological position, camera fields of view, and GPS locations of all security violations overlaid on a geo-located aerial image of the surveillance area in real time
Fast, lightweight, easy to install and use with a currently-supported Microsoft Windows computer
Automatic SightSensor and SightTracker device discovery
Auto-switched site map upon detected alarm
Password-protected user accounts with multiple user access levels (Admin and Guard)
Simultaneous management of multiple sites to add, configure, calibrate, and monitor cameras remotely
Point-and-click access to each device's WebConfig page